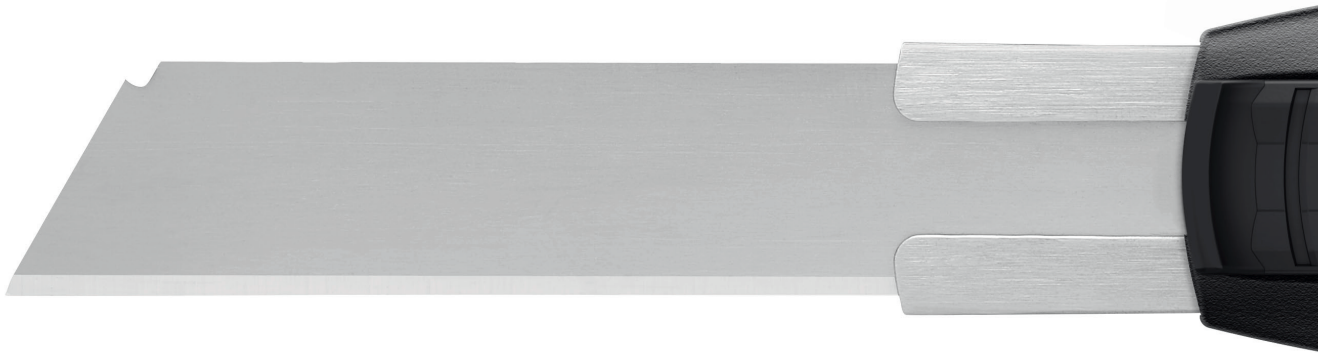


SECUBASE 383  
IMPRESSES WITH ITS SETTINGS.

NEW



THE SAFER WAY TO CUT.

**martor**

# SECUBASE 383

## NO. 383001

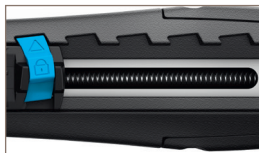


75% of the original size



### Long blade extension

"Long" is actually an understatement: the blade can extend to a maximum of 7.8 cm. The SECUBASE 383 can then be used for the safe and easy cutting of materials such as 4-ply cardboard boxes, bagged goods, paper rolls, building foam and polystyrene sheets.



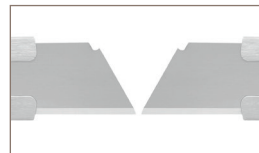
### Locking and retraction

A choice of seven settings (cutting depths from 7 mm to 73 mm) is available when you want to use your SECUBASE 383 as a cutter. Afterwards, release the lock and the blade will retract as usual.



### Ergonomic handle

The SECUBASE 383 has a consistent ergonomic design to protect your hand. The slightly tapered handle is very comfortable to hold. Another ergonomic feature is the slider, which is particularly easy to move because of its built-in ramp.



### For right and left hander

The SECUBASE 383 is supplied ready for use by right-handers. Left handers just need to turn the blade by 180° to start cutting. The slider and the lock are operated with the thumb.



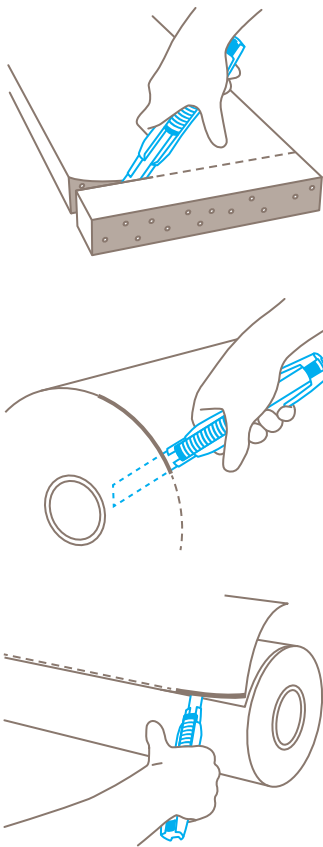
### Easy blade change

To access the long, flexible blade, use the blue blade change button at the end of the handle. You can now pull out the inner section including the slider. The blade is held in position by two magnets.

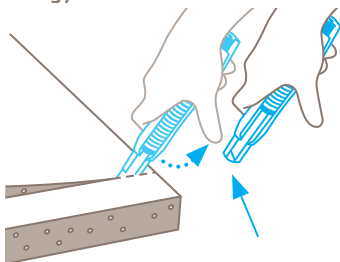
## How to cut is up to you.

A safety knife that also performs as a cutter? The new SECUBASE 383 can be both. Your cutting tool is equipped with automatic blade retraction to prevent cutting injuries. Some cutting tasks, such as saw cuts, however, are easier with a fixed blade. The blade can therefore be locked in seven different positions to enable efficient working.

### Application



### Safety technology











#### Blade retraction and locking – optional safety

The automatic blade retraction of the SECUBASE 383 protects you from cutting injuries. This requires that you remove your thumb from the slider after piercing the cutting material. Alternatively, you can also lock the slider and the blade. When you release the lock, the blade retracts.

## PRODUCT FEATURES

### Technical features

 Optional safety	 Safer blade change (with magnet)
 Very abrasion resistant	 Very ergonomic
 Safety lock	 Adjustable cutting depth 3-73
 For right and left handers	 Lanyard hole


### Main cutting materials

 Cardboard: up to 4-ply	 Layers of foil or paper
 Wrapping, stretch and shrink foil	 Foam, polystyrene
 Bagged goods	 Tape

### Installed blade

 <b>NO. 79</b>	0.50 mm, 109.5 mm long
--	------------------------

### Optional blade

 <b>NO. 179</b>	0.50 mm, 109.5 mm long, stainless
<b>NO. 379</b>	0.50 mm, 109.5 mm long, serrated edge
<b>NO. 7940</b>	0.50 mm, 71.2 mm long
<b>NO. 17940</b>	0.50 mm, 71.2 mm long, stainless

### Certificates and awards



# THE PERFECT FIT FOR ALL. DOES THE PERFECT JOB.

## SECUBASE 383

- › Blade extension of 7.8 cm
- › Automatic blade retraction
- › Optional blade locking
- › 7-position locking
- › Ergonomic handle for left and right handers

## PRODUCT DETAILS

<b>Order No.</b>	NO. 383001.02
<b>Packaging unit</b>	1 in single unit box (10 in multipack)
<b>Knife size (L x W x H)</b>	170.5 x 25 x 34 mm
<b>Main material</b>	Glass fibre reinforced plastic
<b>Weight</b>	78.5 g
<b>Cutting depth</b>	3 - 73 mm
<b>Spare blade Packaging unit Size (L x W x Thickness)</b>	NO. 79.60 (10 in transparent pack) 109.4 x 17.9 x 0.50 mm
<b>Certified</b>	Ergonomic product (IGR)

## Accessories

BELT HOLSTER S WITH CLIP		NO. 9920
USED BLADE CONTAINER		NO. 9810
WALL MOUNT BRACKET USED BLADE CONTAINER		NO. 9845

## CONTACT AND SERVICE

What makes our cutting solutions even safer? Our advisory services! We are always on hand, to give advice, to provide you with training material, to meet with you in person if necessary.

You will find further information on our website:  
[www.martor.com](http://www.martor.com)



At a glance: the safety poster shows the most important functions and correct usage – perfect for your workplace.



From the first cut to changing the blade, our video will show you the best way to use this knife.



Everything you want to know: dimensions, properties, special features and more about our cutting tools can be found in the technical data sheet.



Still have questions? You can reach our service department on [+49 212 73870-0](tel:+49212738700)